



# Product Data Sheet

**Product Type** RJ45 Socket

**Product Model** SE8FDNV-29


**Customer Name** \_\_\_\_\_

Manufacturer	Prepared	Checked	Approved

Customer	Received	Checked	Confirmed



## Product Data Sheet

Product Type	RJ45 Socket	
Product Model	SE8FDNV-29	
Product Features		
<ul style="list-style-type: none"><li>➤ D-shape panel connector with uniform metal flange and standard D-style installation size</li><li>➤ Mountable from the front of the panel</li><li>➤ Complies with Class D according to TIA/EIA568B and ISO/IEC11801 standard</li><li>➤ Fast locking and unlocking for the front and rear feedthrough type providing a guaranteed reliability for continuous and stable signal transmission under moving conditions</li><li>➤ The rear end is a feedthrough downward opening 8-pin horn</li></ul>		



## Product Data Sheet

### Product Parameters

Item	Specification
Connection type	RJ45
Gender	Female

### Electrical Parameters

Item	Specification
Contact resistance	< 10 mΩ
Rated current	1.5 A
Rated voltage	50 V
Insulation resistance	≥ 0.5 GΩ
Dielectric strength	1 KV DC
Frequency range	1~100 MHz
Transmission performance	Class D



## Product Data Sheet

### Mechanical Parameters

Item	Specification
Insertion force	$\leq 20$ N
Service life	> 1000 mating cycles
Locking device	Latch lock

### Material and Environmental Parameters

Item	Specification
Contacts	Copper alloy
Insert	PBT
Contact surface	Au
Panel	Zinc alloy
Panel plating	Cr
Flame-retardant grade	UL 94-V0
Temperature range	-30°C ~ +80°C

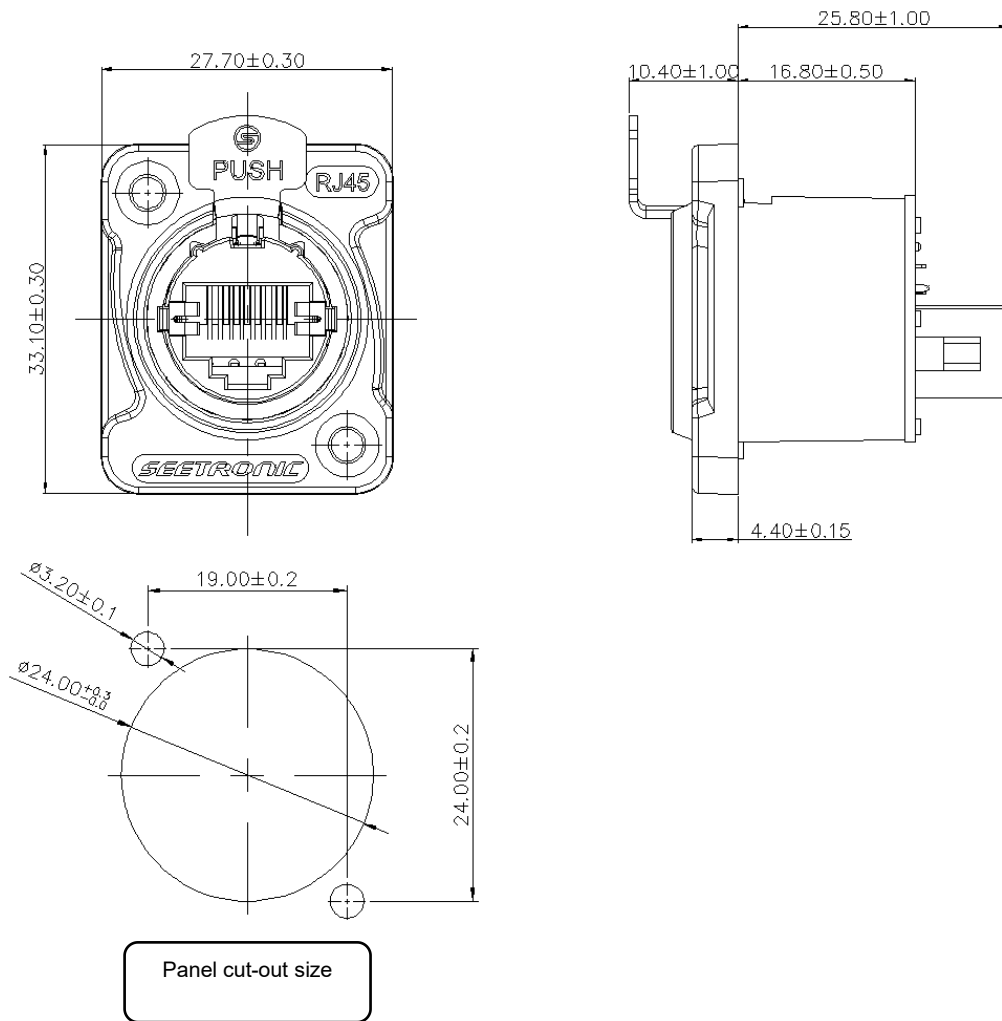
### Standards and Certifications

Standards	TIA/EIA 586B, IEC11801
-----------	------------------------



## Product Data Sheet

### Product Drawing



Unit: mm

### Packaging Method

PE bag packing, 1pc per bag

50pcs per inner carton, 5 inner cartons per master carton (250pcs per master carton)



## Product Data Sheet

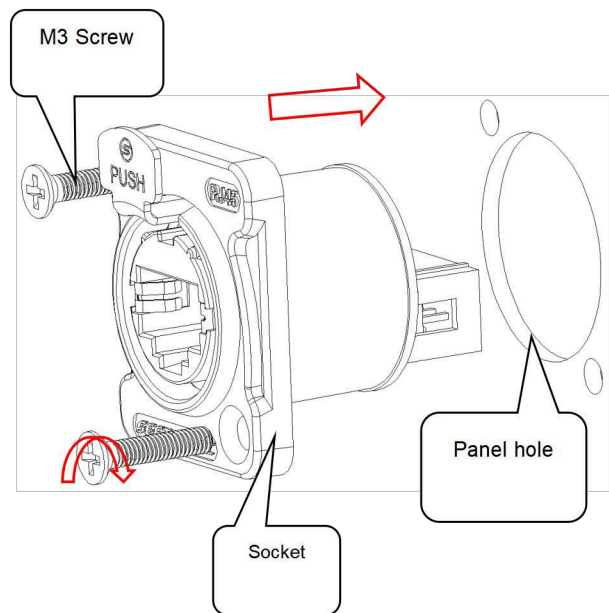
### Accessory

- |  |  |
|--|--|
| <input type="checkbox"/> No accessories    | <input type="checkbox"/> Back fastener plate |
| <input checked="" type="checkbox"/> Screws | <input type="checkbox"/> Waterproof gasket   |

### Assembly Instructions

- (1) Install the socket in front of the opening of the panel, and tighten the screws clockwise with 0.5 Nm torque

(Note: panel thickness 1.5~4.0mm)



- (2) Wiring diagram

